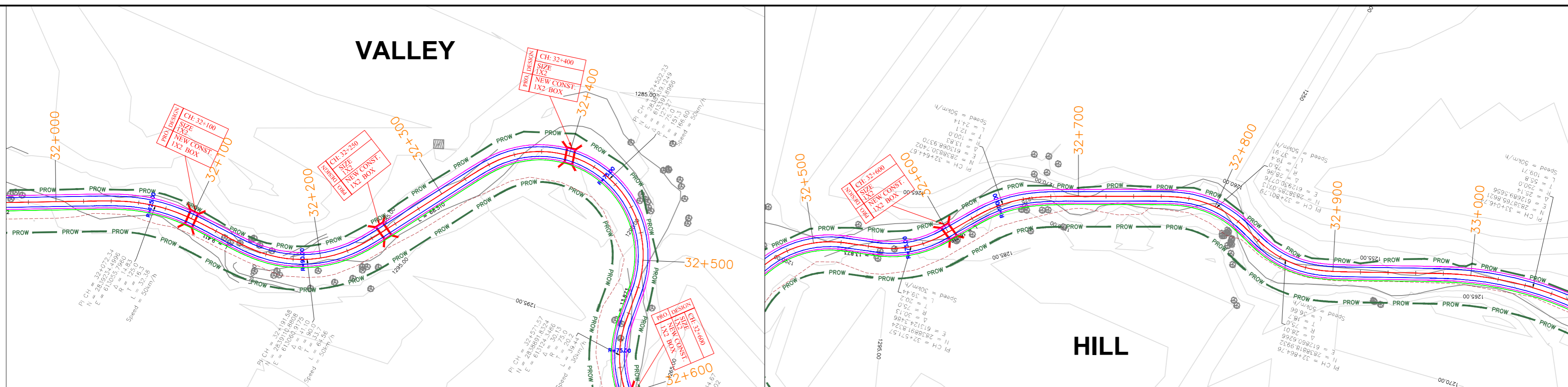


VALLEY



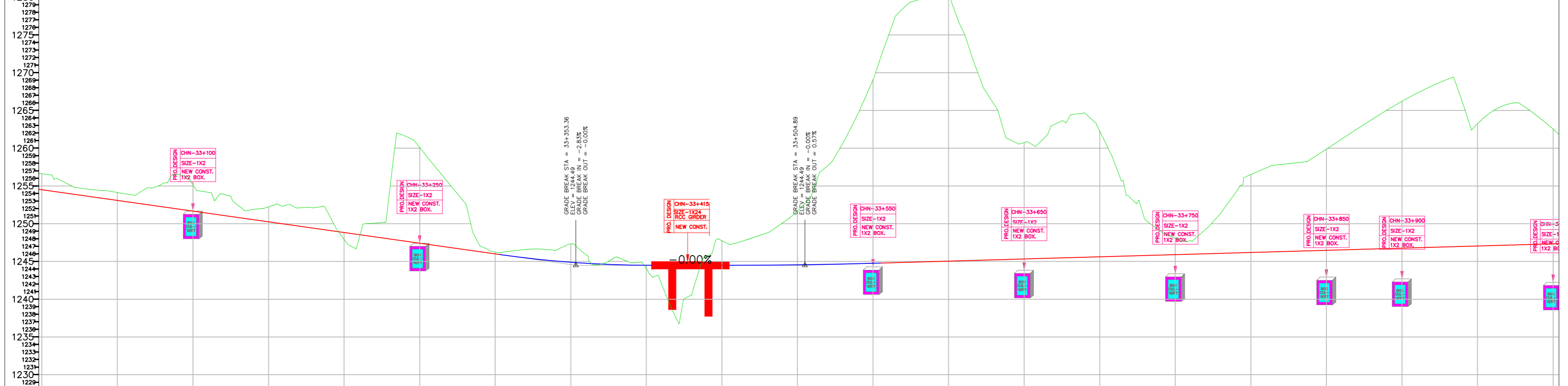
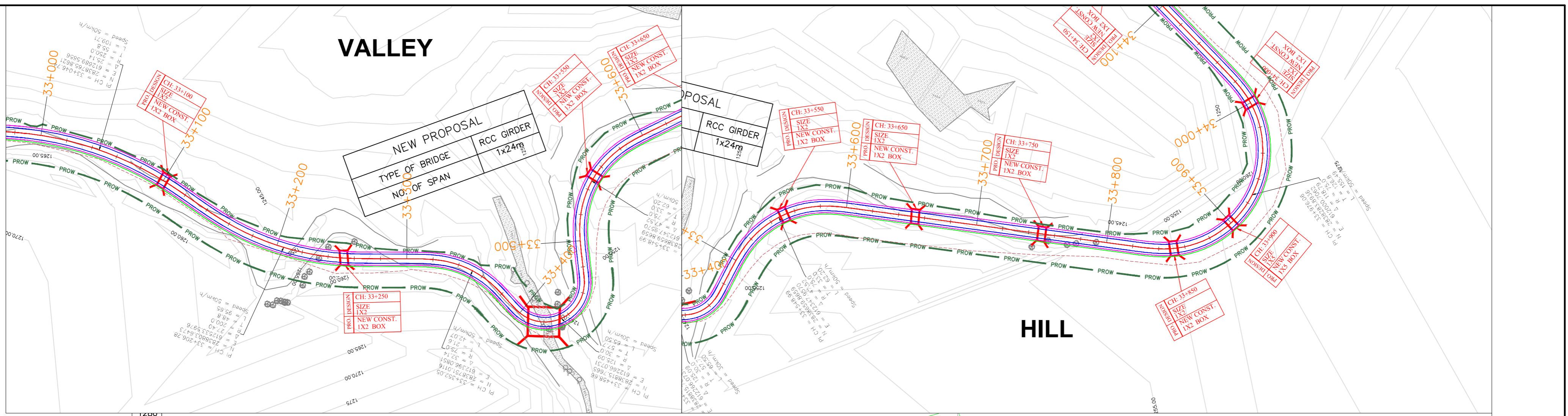
HILL



Station	NEW ROAD LEVEL	EXISTING GENERAL GROUND LEVEL	LEVEL DIFFERENCE	VERTICAL GEOMETRY	HORIZONTAL GEOMETRY	SUPERELEVATION	CHAINAGE
32000.00	1282.81	1282.81	0.00				32000.00
32010.00	1282.50	1282.50	0.00				32010.00
32020.00	1282.27	1282.27	0.00				32020.00
32030.00	1281.964	1281.964	0.00		L: 30.000	7.000%	32030.00
32040.00	1281.681	1281.681	0.00		R: 125.000	7.000%	32040.00
32050.00	1281.398	1281.398	0.00		L: 30.000	7.000%	32050.00
32060.00	1281.115	1281.115	0.00		L: 30.000	7.000%	32060.00
32070.00	1280.831	1280.831	0.00		R: 90.000	7.000%	32070.00
32080.00	1280.548	1280.548	0.00		L: 30.000	7.000%	32080.00
32090.00	1280.265	1280.265	0.00		L: 30.000	7.000%	32090.00
32100.00	1279.982	1279.982	0.00		L: 30.000	7.000%	32100.00
32110.00	1279.699	1279.699	0.00		L: 30.000	7.000%	32110.00
32120.00	1279.416	1279.416	0.00		L: 30.000	7.000%	32120.00
32130.00	1279.132	1279.132	0.00		L: 30.000	7.000%	32130.00
32140.00	1278.849	1278.849	0.00		L: 30.000	7.000%	32140.00
32150.00	1278.566	1278.566	0.00		L: 30.000	7.000%	32150.00
32160.00	1278.283	1278.283	0.00		L: 30.000	7.000%	32160.00
32170.00	1278.000	1278.000	0.00		L: 30.000	7.000%	32170.00
32180.00	1277.717	1277.717	0.00		L: 30.000	7.000%	32180.00
32190.00	1277.433	1277.433	0.00		L: 30.000	7.000%	32190.00
32200.00	1277.150	1277.150	0.00		L: 30.000	7.000%	32200.00
32210.00	1276.867	1276.867	0.00		L: 30.000	7.000%	32210.00
32220.00	1276.584	1276.584	0.00		L: 30.000	7.000%	32220.00
32230.00	1276.301	1276.301	0.00		L: 30.000	7.000%	32230.00
32240.00	1276.018	1276.018	0.00		L: 30.000	7.000%	32240.00
32250.00	1275.734	1275.734	0.00		L: 30.000	7.000%	32250.00
32260.00	1275.451	1275.451	0.00		L: 30.000	7.000%	32260.00
32270.00	1275.168	1275.168	0.00		L: 30.000	7.000%	32270.00
32280.00	1274.885	1274.885	0.00		L: 30.000	7.000%	32280.00
32290.00	1274.602	1274.602	0.00		L: 30.000	7.000%	32290.00
32300.00	1274.318	1274.318	0.00		L: 30.000	7.000%	32300.00
32310.00	1274.035	1274.035	0.00		L: 30.000	7.000%	32310.00
32320.00	1273.752	1273.752	0.00		L: 30.000	7.000%	32320.00
32330.00	1273.469	1273.469	0.00		L: 30.000	7.000%	32330.00
32340.00	1273.186	1273.186	0.00		L: 30.000	7.000%	32340.00
32350.00	1272.903	1272.903	0.00		L: 30.000	7.000%	32350.00
32360.00	1272.619	1272.619	0.00		L: 30.000	7.000%	32360.00
32370.00	1272.336	1272.336	0.00		L: 30.000	7.000%	32370.00
32380.00	1272.053	1272.053	0.00		L: 30.000	7.000%	32380.00
32390.00	1271.770	1271.770	0.00		L: 30.000	7.000%	32390.00
32400.00	1271.487	1271.487	0.00		L: 30.000	7.000%	32400.00
32410.00	1271.204	1271.204	0.00		L: 30.000	7.000%	32410.00
32420.00	1270.920	1270.920	0.00		L: 30.000	7.000%	32420.00
32430.00	1270.637	1270.637	0.00		L: 30.000	7.000%	32430.00
32440.00	1270.354	1270.354	0.00		L: 30.000	7.000%	32440.00
32450.00	1270.071	1270.071	0.00		L: 30.000	7.000%	32450.00
32460.00	1269.788	1269.788	0.00		L: 30.000	7.000%	32460.00
32470.00	1269.505	1269.505	0.00		L: 30.000	7.000%	32470.00
32480.00	1269.221	1269.221	0.00		L: 30.000	7.000%	32480.00
32490.00	1268.938	1268.938	0.00		L: 30.000	7.000%	32490.00
32500.00	1268.655	1268.655	0.00		L: 30.000	7.000%	32500.00
32510.00	1268.372	1268.372	0.00		L: 30.000	7.000%	32510.00
32520.00	1268.089	1268.089	0.00		L: 30.000	7.000%	32520.00
32530.00	1267.805	1267.805	0.00		L: 30.000	7.000%	32530.00
32540.00	1267.522	1267.522	0.00		L: 30.000	7.000%	32540.00
32550.00	1267.239	1267.239	0.00		L: 30.000	7.000%	32550.00
32560.00	1266.956	1266.956	0.00		L: 30.000	7.000%	32560.00
32570.00	1266.673	1266.673	0.00		L: 30.000	7.000%	32570.00
32580.00	1266.390	1266.390	0.00		L: 30.000	7.000%	32580.00
32590.00	1266.106	1266.106	0.00		L: 30.000	7.000%	32590.00
32600.00	1265.823	1265.823	0.00		L: 30.000	7.000%	32600.00
32610.00	1265.540	1265.540	0.00		L: 30.000	7.000%	32610.00
32620.00	1265.257	1265.257	0.00		L: 30.000	7.000%	32620.00
32630.00	1264.974	1264.974	0.00		L: 30.000	7.000%	32630.00
32640.00	1264.691	1264.691	0.00		L: 30.000	7.000%	32640.00
32650.00	1264.407	1264.407	0.00		L: 30.000	7.000%	32650.00
32660.00	1264.124	1264.124	0.00		L: 30.000	7.000%	32660.00
32670.00	1263.841	1263.841	0.00		L: 30.000	7.000%	32670.00
32680.00	1263.558	1263.558	0.00		L: 30.000	7.000%	32680.00
32690.00	1263.275	1263.275	0.00		L: 30.000	7.000%	32690.00
32700.00	1262.992	1262.992	0.00		L: 30.000	7.000%	32700.00
32710.00	1262.708	1262.708	0.00		L: 30.000	7.000%	32710.00
32720.00	1262.425	1262.425	0.00		L: 30.000	7.000%	32720.00
32730.00	1262.142	1262.142	0.00		L: 30.000	7.000%	32730.00
32740.00	1261.859	1261.859	0.00		L: 30.000	7.000%	32740.00
32750.00	1261.576	1261.576	0.00		L: 30.000	7.000%	32750.00
32760.00	1261.292	1261.292	0.00		L: 30.000	7.000%	32760.00
32770.00	1261.009	1261.009	0.00		L: 30.000	7.000%	32770.00
32780.00	1260.726	1260.726	0.00		L: 30.000	7.000%	32780.00
32790.00	1260.443	1260.443	0.00		L: 30.000	7.000%	32790.00
32800.00	1260.160	1260.160	0.00		L: 30.000	7.000%	32800.00
32810.00	1259.877	1259.877	0.00		L: 30.000	7.000%	32810.00
32820.00	1259.593	1259.593	0.00		L: 30.000	7.000%	32820.00
32830.00	1259.310	1259.310	0.00		L: 30.000	7.000%	32830.00
32840.00	1259.027	1259.027	0.00		L: 30.000	7.000%	32840.00
32850.00	1258.744	1258.744	0.00		L: 30.000	7.000%	32850.00
32860.00	1258.461	1258.461	0.00		L: 30.000	7.000%	32860.00
32870.00	1258.178	1258.178	0.00		L: 30.000	7.000%	32870.00
32880.00	1257.894	1257.894	0.00		L: 30.000	7.000%	32880.00
32890.00	1257.611	1257.611	0.00		L: 30.000	7.000%	32890.00
32900.00	1257.328	1257.328	0.00		L: 30.000	7.000%	32900.00
32910.00	1257.045	1257.045	0.00		L: 30.000	7.000%	32910.00
32920.00	1256.762	1256.762	0.00		L: 30.000	7.000%	32920.00
32930.00	1256.479	1256.479	0.00		L: 30.000	7.000%	32930.00
32940.00	1256.195	1256.195	0.00		L: 30.000	7.000%	32940.00
32950.00	1255.912	1255.912	0.00		L: 30.000	7.000%	32950.00
32960.00	1255.629	1255.629	0.00		L: 30.000	7.000%	32960.00
32970.00	1255.346	1255.346	0.00		L: 30.000	7.000%	32970.00
32980.00	1255.063	1255.063	0.00		L: 30.000	7.000%	32980.00
32990.00	1254.780	1254.780	0.00		L: 30.000	7.000%	32990.00
33000.00	1254.496	1254.496	0.00		L: 30.000	7.000%	33000.00

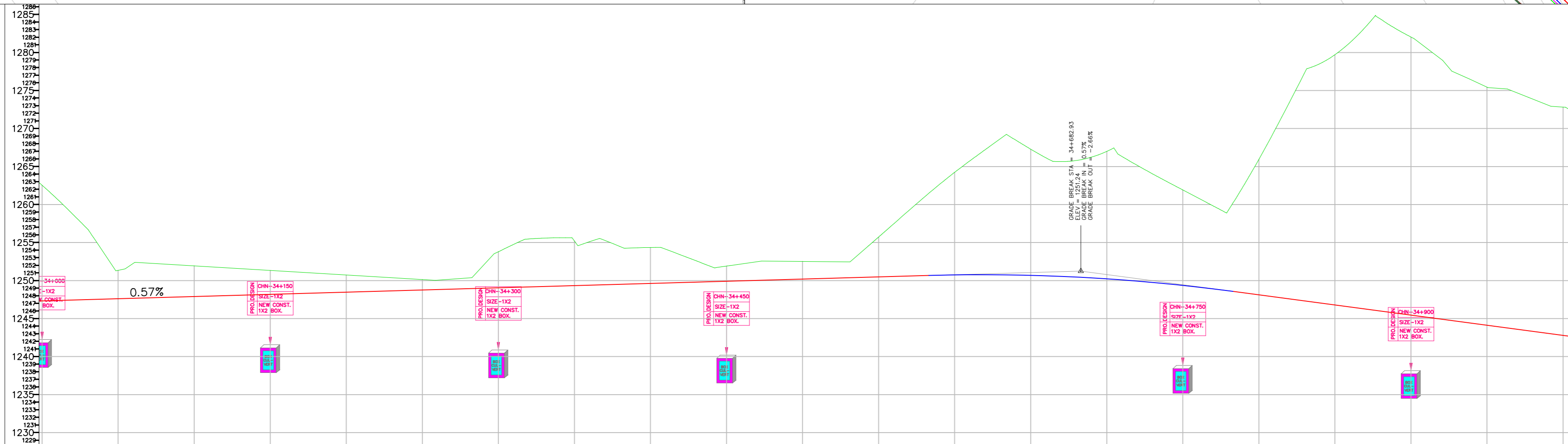
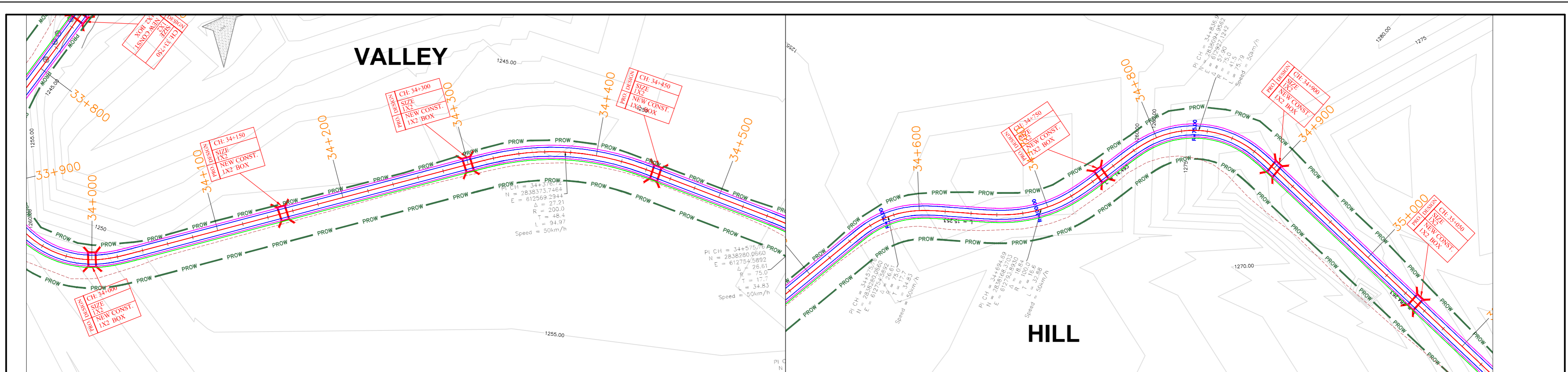
Revision Details	Chk. By: _____ Date: _____	Project Title Consultancy Services for carrying out Feasibility Study, Preparation of Detailed Project Report (DPR) and providing pre-construction services in respect of 2 Lining of Kohima Bypass connecting NH-39 (New NH-02), NH-150 (New NH-02), NH-61 (New NH-29) and NH-39 (New NH-02) on Engineering, Procurement and Construction (EPC) mode in the state of Nagaland	Client National Highways & Infrastructure Development Corporation Ltd	Drawing Title: PLAN & PROFILE	CONSULTANT HIGHWAY ENGINEERING CONSULTANT IN ASSOCIATION WITH AGNITIO INFRASTRUCTURE PROJECT PVT LTD	LEGEND PROPOSED CENTRE LINE CARRIAGEWAY PAVED SHOULDER FORMATION WIDTH CUT LINE PROPOSED ROW
		This drawing is the property of AGNITIO INFRASTRUCTURE PROJECTS PVT LTD and must not be passed on to any person or body not authorised by us to receive it nor be copied or otherwise made use of either in full or in part by such person or body without our prior permission in writing. Original Size: A2 Path: _____ Plotting Scale: _____	Drawing No.: HECC-AIPPL/NHIDCL/KB/GAD/ Scale: - NTS Dgn. P. MISHRA Appd. A.C. GARG Date: JAN.-2020	Sheet: 33 OF 45		

VALLEY



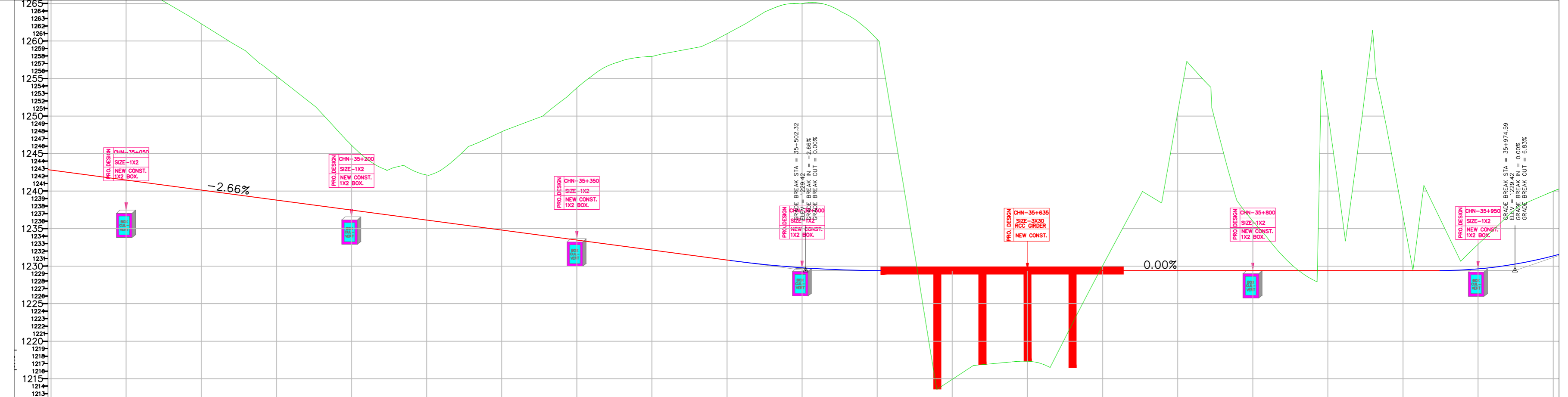
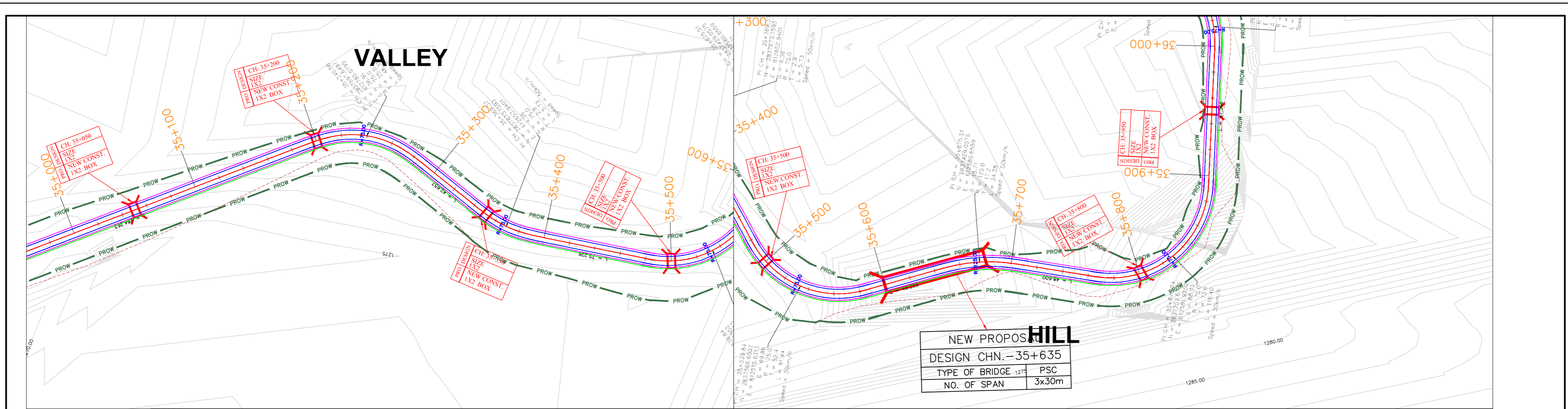
NEW ROAD LEVEL	EXISTING GENERAL GROUND LEVEL	LEVEL DIFFERENCE	VERTICAL GEOMETRY	HORIZONTAL GEOMETRY	SUPERELEVATION	CHAINAGE
1254.496	1256.621	-2.125				33000.000
1254.213	1255.996	-1.782				33010.000
1253.930	1254.990	-1.060				33020.000
1253.647	1254.581	-0.934				33030.000
1253.364	1254.386	-1.022				33040.000
1253.080	1254.128	-1.048				33050.000
1252.797	1253.821	-1.024				33060.000
1252.514	1254.751	-2.237				33070.000
1252.231	1255.319	-3.088				33080.000
1251.948	1256.533	-4.585				33090.000
1251.665	1255.141	-3.483				33100.000
1251.381	1254.163	-2.782				33110.000
1251.098	1253.906	-2.808				33120.000
1250.815	1253.391	-1.576				33130.000
1250.532	1251.893	-1.361				33140.000
1250.249	1252.244	-1.995				33150.000
1249.966	1252.348	-2.383				33160.000
1249.682	1252.113	-2.410				33170.000
1249.399	1251.190	-2.074				33180.000
1249.116	1248.111	-0.905				33190.000
1248.833	1248.078	-0.438				33200.000
1248.550	1247.983	-0.567				33210.000
1248.267	1247.634	-0.633				33220.000
1247.983	1247.102	-0.881				33230.000
1247.700	1246.634	-1.066				33240.000
1247.417	1246.102	-1.315				33250.000
1247.134	1245.616	-1.518				33260.000
1246.851	1245.179	-1.672				33270.000
1246.567	1244.755	-1.812				33280.000
1246.284	1244.229	-2.055				33290.000
1246.001	1243.704	-2.297				33300.000
1245.718	1243.178	-2.540				33310.000
1245.435	1242.652	-2.783				33320.000
1245.152	1242.126	-3.026				33330.000
1244.869	1241.600	-3.269				33340.000
1244.586	1241.074	-3.512				33350.000
1244.303	1240.548	-3.755				33360.000
1244.020	1240.022	-4.000				33370.000
1243.737	1239.496	-4.243				33380.000
1243.454	1238.970	-4.487				33390.000
1243.171	1238.444	-4.730				33400.000
1242.888	1237.918	-4.973				33410.000
1242.605	1237.392	-5.216				33420.000
1242.322	1236.866	-5.459				33430.000
1242.039	1236.340	-5.702				33440.000
1241.756	1235.814	-5.945				33450.000
1241.473	1235.288	-6.188				33460.000
1241.190	1234.762	-6.431				33470.000
1240.907	1234.236	-6.674				33480.000
1240.624	1233.710	-6.917				33490.000
1240.341	1233.184	-7.160				33500.000
1240.058	1232.658	-7.403				33510.000
1239.775	1232.132	-7.646				33520.000
1239.492	1231.606	-7.889				33530.000
1239.209	1231.080	-8.132				33540.000
1238.926	1230.554	-8.375				33550.000
1238.643	1230.028	-8.618				33560.000
1238.360	1229.502	-8.861				33570.000
1238.077	1228.976	-9.104				33580.000
1237.794	1228.450	-9.347				33590.000
1237.511	1227.924	-9.590				33600.000
1237.228	1227.398	-9.833				33610.000
1236.945	1226.872	-10.076				33620.000
1236.662	1226.346	-10.319				33630.000
1236.379	1225.820	-10.562				33640.000
1236.096	1225.294	-10.805				33650.000
1235.813	1224.768	-11.048				33660.000
1235.530	1224.242	-11.291				33670.000
1235.247	1223.716	-11.534				33680.000
1234.964	1223.190	-11.777				33690.000
1234.681	1222.664	-12.020				33700.000
1234.398	1222.138	-12.263				33710.000
1234.115	1221.612	-12.506				33720.000
1233.832	1221.086	-12.749				33730.000
1233.549	1220.560	-12.992				33740.000
1233.266	1220.034	-13.235				33750.000
1232.983	1219.508	-13.478				33760.000
1232.700	1218.982	-13.721				33770.000
1232.417	1218.456	-13.964				33780.000
1232.134	1217.930	-14.207				33790.000
1231.851	1217.404	-14.450				33800.000
1231.568	1216.878	-14.693				33810.000
1231.285	1216.352	-14.936				33820.000
1231.002	1215.826	-15.179				33830.000
1230.719	1215.300	-15.422				33840.000
1230.436	1214.774	-15.665				33850.000
1230.153	1214.248	-15.908				33860.000
1229.870	1213.722	-16.151				33870.000
1229.587	1213.196	-16.394				33880.000
1229.304	1212.670	-16.637				33890.000
1229.021	1212.144	-16.880				33900.000
1228.738	1211.618	-17.123				33910.000
1228.455	1211.092	-17.366				33920.000
1228.172	1210.566	-17.609				33930.000
1227.889	1210.040	-17.852				33940.000
1227.606	1209.514	-18.095				33950.000
1227.323	1208.988	-18.338				33960.000
1227.040	1208.462	-18.581				33970.000
1226.757	1207.936	-18.824				33980.000
1226.474	1207.410	-19.067				33990.000
1226.191	1206.884	-19.310				34000.000

Project Title Consultancy Services for carrying out Feasibility Study, Preparation of Detailed Project Report (DPR) and providing pre-construction services in respect of 2 Lining of Kohima Bypass connecting NH-39 (New NH-02), NH-150 (New NH-02), NH-61 (New NH-29) and NH-39 (New NH-02) on Engineering, Procurement and Construction (EPC) mode in the state of Nagaland		Client National Highways & Infrastructure Development Corporation Ltd		Drawing Title: PLAN & PROFILE		CONSULTANT HIGHWAY ENGINEERING CONSULTANT IN ASSOCIATION WITH AGNITIO INFRASTRUCTURE PROJECT PVT LTD	
Revision Details		This drawing is the property of AGNITIO INFRASTRUCTURE PROJECTS PVT LTD and must not be passed on to any person or body not authorised by us to receive it nor be copied or otherwise made use of either in full or in part by such person or body without our prior permission in writing. Original Size: A2 Path - Plotting Scale:		Drawing No.: HEC-AIPPL/NHIDCL/KB/GAD/ Scale: - NTS Dn: PRAWAT Dgn: P.MISHRA Appd: A.C. GARG		Sheet: 34 OF 45 Date: JAN.-2020	
Legend PROPOSED CENTRE LINE CARRIAGEWAY PAVED SHOULDER FORMATION WIDTH CUT LINE PROPOSED ROW							



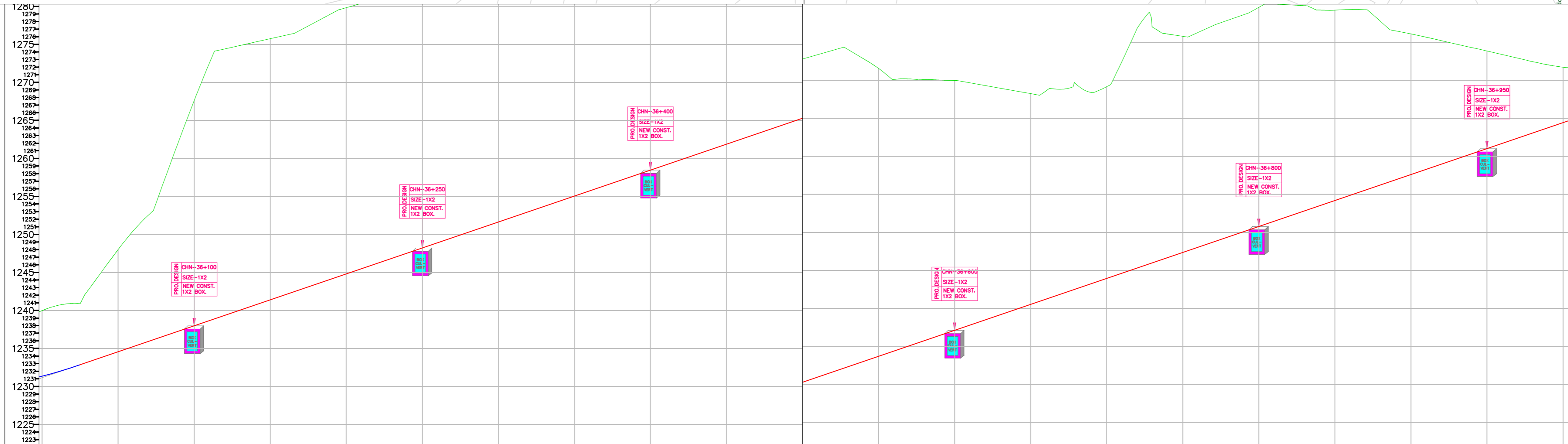
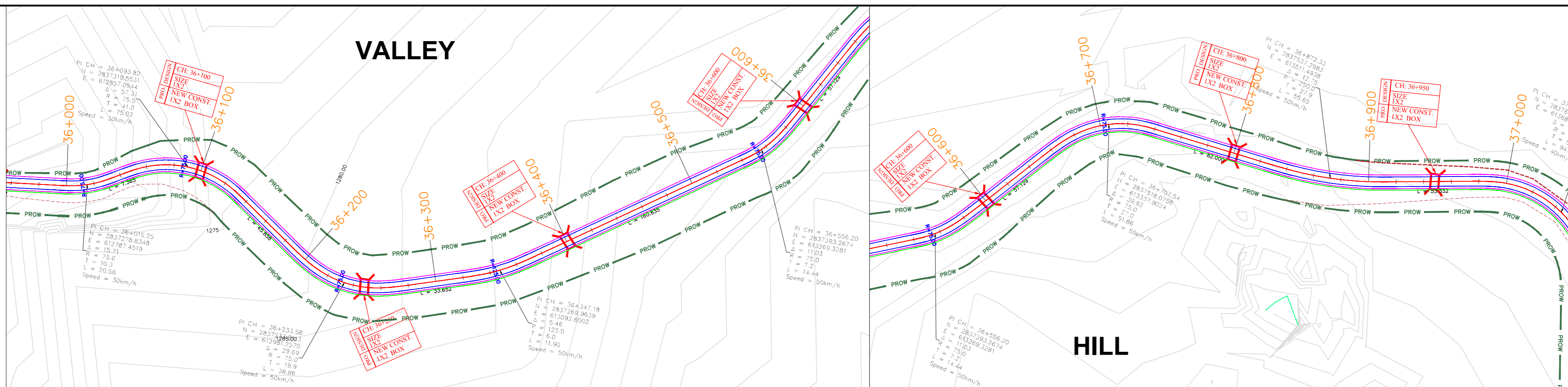
NEW ROAD LEVEL	EXISTING GENERAL GROUND LEVEL	LEVEL DIFFERENCE	VERTICAL GEOMETRY	HORIZONTAL GEOMETRY	SUPERELEVATION	CHAINAGE
1247.326	1247.326	0.000	G = 0.573%	L = 30.000	0.000%	34000.000
1247.383	1247.383	0.000				34010.000
1247.441	1247.441	0.000	L = 263.557	R = 200.000 L = 94.966	5.600%	34020.000
1247.498	1247.498	0.000				34030.000
1247.555	1247.555	0.000	R = 100.000 L = 32.881	L = 40.000	7.000%	34040.000
1247.612	1247.612	0.000				34050.000
1247.670	1247.670	0.000	R = 75.000 L = 75.789	L = 30.000	7.000%	34060.000
1247.727	1247.727	0.000				34070.000
1247.784	1247.784	0.000	R = 75.000 L = 75.789	L = 30.000	7.000%	34080.000
1247.841	1247.841	0.000				34090.000
1247.899	1247.899	0.000	R = 75.000 L = 75.789	L = 30.000	7.000%	34100.000
1247.956	1247.956	0.000				34110.000
1248.013	1248.013	0.000	R = 75.000 L = 75.789	L = 30.000	7.000%	34120.000
1248.071	1248.071	0.000				34130.000
1248.128	1248.128	0.000	R = 75.000 L = 75.789	L = 30.000	7.000%	34140.000
1248.185	1248.185	0.000				34150.000
1248.242	1248.242	0.000	R = 75.000 L = 75.789	L = 30.000	7.000%	34160.000
1248.300	1248.300	0.000				34170.000
1248.357	1248.357	0.000	R = 75.000 L = 75.789	L = 30.000	7.000%	34180.000
1248.414	1248.414	0.000				34190.000
1248.472	1248.472	0.000	R = 75.000 L = 75.789	L = 30.000	7.000%	34200.000
1248.529	1248.529	0.000				34210.000
1248.586	1248.586	0.000	R = 75.000 L = 75.789	L = 30.000	7.000%	34220.000
1248.643	1248.643	0.000				34230.000
1248.701	1248.701	0.000	R = 75.000 L = 75.789	L = 30.000	7.000%	34240.000
1248.758	1248.758	0.000				34250.000
1248.815	1248.815	0.000	R = 75.000 L = 75.789	L = 30.000	7.000%	34260.000
1248.872	1248.872	0.000				34270.000
1248.930	1248.930	0.000	R = 75.000 L = 75.789	L = 30.000	7.000%	34280.000
1248.987	1248.987	0.000				34290.000
1249.044	1249.044	0.000	R = 75.000 L = 75.789	L = 30.000	7.000%	34300.000
1249.102	1249.102	0.000				34310.000
1249.159	1249.159	0.000	R = 75.000 L = 75.789	L = 30.000	7.000%	34320.000
1249.216	1249.216	0.000				34330.000
1249.273	1249.273	0.000	R = 75.000 L = 75.789	L = 30.000	7.000%	34340.000
1249.331	1249.331	0.000				34350.000
1249.388	1249.388	0.000	R = 75.000 L = 75.789	L = 30.000	7.000%	34360.000
1249.445	1249.445	0.000				34370.000
1249.503	1249.503	0.000	R = 75.000 L = 75.789	L = 30.000	7.000%	34380.000
1249.560	1249.560	0.000				34390.000
1249.617	1249.617	0.000	R = 75.000 L = 75.789	L = 30.000	7.000%	34400.000
1249.674	1249.674	0.000				34410.000
1249.732	1249.732	0.000	R = 75.000 L = 75.789	L = 30.000	7.000%	34420.000
1249.789	1249.789	0.000				34430.000
1249.846	1249.846	0.000	R = 75.000 L = 75.789	L = 30.000	7.000%	34440.000
1249.903	1249.903	0.000				34450.000
1249.961	1249.961	0.000	R = 75.000 L = 75.789	L = 30.000	7.000%	34460.000
1250.018	1250.018	0.000				34470.000
1250.075	1250.075	0.000	R = 75.000 L = 75.789	L = 30.000	7.000%	34480.000
1250.133	1250.133	0.000				34490.000
1250.190	1250.190	0.000	R = 75.000 L = 75.789	L = 30.000	7.000%	34500.000
1250.247	1250.247	0.000				34510.000
1250.304	1250.304	0.000	R = 75.000 L = 75.789	L = 30.000	7.000%	34520.000
1250.362	1250.362	0.000				34530.000
1250.419	1250.419	0.000	R = 75.000 L = 75.789	L = 30.000	7.000%	34540.000
1250.476	1250.476	0.000				34550.000
1250.534	1250.534	0.000	R = 75.000 L = 75.789	L = 30.000	7.000%	34560.000
1250.591	1250.591	0.000				34570.000
1250.648	1250.648	0.000	R = 75.000 L = 75.789	L = 30.000	7.000%	34580.000
1250.705	1250.705	0.000				34590.000
1250.762	1250.762	0.000	R = 75.000 L = 75.789	L = 30.000	7.000%	34600.000
1250.819	1250.819	0.000				34610.000
1250.876	1250.876	0.000	R = 75.000 L = 75.789	L = 30.000	7.000%	34620.000
1250.933	1250.933	0.000				34630.000
1250.990	1250.990	0.000	R = 75.000 L = 75.789	L = 30.000	7.000%	34640.000
1251.047	1251.047	0.000				34650.000
1251.104	1251.104	0.000	R = 75.000 L = 75.789	L = 30.000	7.000%	34660.000
1251.161	1251.161	0.000				34670.000
1251.218	1251.218	0.000	R = 75.000 L = 75.789	L = 30.000	7.000%	34680.000
1251.275	1251.275	0.000				34690.000
1251.332	1251.332	0.000	R = 75.000 L = 75.789	L = 30.000	7.000%	34700.000
1251.389	1251.389	0.000				34710.000
1251.446	1251.446	0.000	R = 75.000 L = 75.789	L = 30.000	7.000%	34720.000
1251.503	1251.503	0.000				34730.000
1251.560	1251.560	0.000	R = 75.000 L = 75.789	L = 30.000	7.000%	34740.000
1251.617	1251.617	0.000				34750.000
1251.674	1251.674	0.000	R = 75.000 L = 75.789	L = 30.000	7.000%	34760.000
1251.731	1251.731	0.000				34770.000
1251.788	1251.788	0.000	R = 75.000 L = 75.789	L = 30.000	7.000%	34780.000
1251.845	1251.845	0.000				34790.000
1251.902	1251.902	0.000	R = 75.000 L = 75.789	L = 30.000	7.000%	34800.000
1251.959	1251.959	0.000				34810.000
1252.016	1252.016	0.000	R = 75.000 L = 75.789	L = 30.000	7.000%	34820.000
1252.073	1252.073	0.000				34830.000
1252.130	1252.130	0.000	R = 75.000 L = 75.789	L = 30.000	7.000%	34840.000
1252.187	1252.187	0.000				34850.000
1252.244	1252.244	0.000	R = 75.000 L = 75.789	L = 30.000	7.000%	34860.000
1252.301	1252.301	0.000				34870.000
1252.358	1252.358	0.000	R = 75.000 L = 75.789	L = 30.000	7.000%	34880.000
1252.415	1252.415	0.000				34890.000
1252.472	1252.472	0.000	R = 75.000 L = 75.789	L = 30.000	7.000%	34900.000
1252.529	1252.529	0.000				34910.000
1252.586	1252.586	0.000	R = 75.000 L = 75.789	L = 30.000	7.000%	34920.000
1252.643	1252.643	0.000				34930.000
1252.700	1252.700	0.000	R = 75.000 L = 75.789	L = 30.000	7.000%	34940.000
1252.757	1252.757	0.000				34950.000
1252.814	1252.814	0.000	R = 75.000 L = 75.789	L = 30.000	7.000%	34960.000
1252.871	1252.871	0.000				34970.000
1252.928	1252.928	0.000	R = 75.000 L = 75.789	L = 30.000	7.000%	34980.000
1252.985	1252.985	0.000				34990.000
1253.042	1253.042	0.000	R = 75.000 L = 75.789	L = 30.000	7.000%	35000.000
1253.099	1253.099	0.000				

Revision Details	Project Title	Client	Drawing Title: PLAN & PROFILE	CONSULTANT	LEGEND
	Consultancy Services for carrying out Feasibility Study, Preparation of Detailed Project Report (DPR) and providing pre-construction services in respect of 2 Lining of Kohima Bypass connecting NH-39 (New NH-02), NH-150 (New NH-02), NH-61 (New NH-29) and NH-39 (New NH-02) on Engineering, Procurement and Construction (EPC) mode in the state of Nagaland				
Chk. By	Date Suffix	Original Size: A2	Scale: - NTS	Sheet: 35 OF 45	<ul style="list-style-type: none"> PROPOSED CENTRE LINE CARRIAGEWAY PAVED SHOULDER FORMATION WIDTH CUT LINE PROPOSED ROW
		Plotting Scale:	Drn: PRAWAT	Dgn: P.MISHRA	
			Date: JAN.-2020		



NEW ROAD LEVEL	EXISTING GENERAL GROUND LEVEL	LEVEL DIFFERENCE	VERTICAL GEOMETRY	HORIZONTAL GEOMETRY	SUPERELEVATION	CHAINAGE
1242.795	1242.529	-0.266	C = -2.663% L = 669.382	L = 284.263	7.000%	35000.000
1242.529	1242.263	-0.266				35010.000
1242.263	1241.996	-0.267	C = 0.000% L = 372.277	L = 10.000	7.000%	35020.000
1241.996	1241.730	-0.266				35030.000
1241.730	1241.464	-0.266	R = 75.000 L = 91.441	L = 10.000	7.000%	35040.000
1241.464	1241.198	-0.266				35050.000
1241.198	1240.931	-0.267	R = 75.000 L = 116.403	L = 10.000	7.000%	35060.000
1240.931	1240.665	-0.266				35070.000
1240.665	1240.399	-0.266	R = 75.000 L = 123.014	L = 10.000	7.000%	35080.000
1240.399	1240.133	-0.266				35090.000
1240.133	1239.866	-0.267	R = 75.000 L = 123.014	L = 10.000	7.000%	35100.000
1239.866	1239.600	-0.266				35110.000
1239.600	1239.334	-0.266	R = 75.000 L = 123.014	L = 10.000	7.000%	35120.000
1239.334	1239.067	-0.267				35130.000
1239.067	1238.801	-0.266	R = 75.000 L = 123.014	L = 10.000	7.000%	35140.000
1238.801	1238.535	-0.266				35150.000
1238.535	1238.269	-0.266	R = 75.000 L = 123.014	L = 10.000	7.000%	35160.000
1238.269	1238.002	-0.267				35170.000
1238.002	1237.736	-0.266	R = 75.000 L = 123.014	L = 10.000	7.000%	35180.000
1237.736	1237.470	-0.266				35190.000
1237.470	1237.204	-0.266	R = 75.000 L = 123.014	L = 10.000	7.000%	35200.000
1237.204	1236.937	-0.267				35210.000
1236.937	1236.671	-0.266	R = 75.000 L = 123.014	L = 10.000	7.000%	35220.000
1236.671	1236.405	-0.266				35230.000
1236.405	1236.138	-0.267	R = 75.000 L = 123.014	L = 10.000	7.000%	35240.000
1236.138	1235.872	-0.266				35250.000
1235.872	1235.606	-0.266	R = 75.000 L = 123.014	L = 10.000	7.000%	35260.000
1235.606	1235.340	-0.266				35270.000
1235.340	1235.073	-0.267	R = 75.000 L = 123.014	L = 10.000	7.000%	35280.000
1235.073	1234.807	-0.266				35290.000
1234.807	1234.541	-0.266	R = 75.000 L = 123.014	L = 10.000	7.000%	35300.000
1234.541	1234.275	-0.266				35310.000
1234.275	1234.008	-0.267	R = 75.000 L = 123.014	L = 10.000	7.000%	35320.000
1234.008	1233.742	-0.266				35330.000
1233.742	1233.476	-0.266	R = 75.000 L = 123.014	L = 10.000	7.000%	35340.000
1233.476	1233.210	-0.266				35350.000
1233.210	1232.943	-0.267	R = 75.000 L = 123.014	L = 10.000	7.000%	35360.000
1232.943	1232.677	-0.266				35370.000
1232.677	1232.411	-0.266	R = 75.000 L = 123.014	L = 10.000	7.000%	35380.000
1232.411	1232.144	-0.267				35390.000
1232.144	1231.878	-0.266	R = 75.000 L = 123.014	L = 10.000	7.000%	35400.000
1231.878	1231.612	-0.266				35410.000
1231.612	1231.346	-0.266	R = 75.000 L = 123.014	L = 10.000	7.000%	35420.000
1231.346	1231.079	-0.267				35430.000
1231.079	1230.813	-0.266	R = 75.000 L = 123.014	L = 10.000	7.000%	35440.000
1230.813	1230.547	-0.266				35450.000
1230.547	1230.281	-0.266	R = 75.000 L = 123.014	L = 10.000	7.000%	35460.000
1230.281	1230.015	-0.266				35470.000
1230.015	1229.749	-0.266	R = 75.000 L = 123.014	L = 10.000	7.000%	35480.000
1229.749	1229.483	-0.266				35490.000
1229.483	1229.217	-0.266	R = 75.000 L = 123.014	L = 10.000	7.000%	35500.000
1229.217	1228.951	-0.266				35510.000
1228.951	1228.685	-0.266	R = 75.000 L = 123.014	L = 10.000	7.000%	35520.000
1228.685	1228.419	-0.266				35530.000
1228.419	1228.153	-0.266	R = 75.000 L = 123.014	L = 10.000	7.000%	35540.000
1228.153	1227.887	-0.266				35550.000
1227.887	1227.621	-0.266	R = 75.000 L = 123.014	L = 10.000	7.000%	35560.000
1227.621	1227.355	-0.266				35570.000
1227.355	1227.089	-0.266	R = 75.000 L = 123.014	L = 10.000	7.000%	35580.000
1227.089	1226.823	-0.266				35590.000
1226.823	1226.557	-0.266	R = 75.000 L = 123.014	L = 10.000	7.000%	35600.000
1226.557	1226.291	-0.266				35610.000
1226.291	1226.025	-0.266	R = 75.000 L = 123.014	L = 10.000	7.000%	35620.000
1226.025	1225.759	-0.266				35630.000
1225.759	1225.493	-0.266	R = 75.000 L = 123.014	L = 10.000	7.000%	35640.000
1225.493	1225.227	-0.266				35650.000
1225.227	1224.961	-0.266	R = 75.000 L = 123.014	L = 10.000	7.000%	35660.000
1224.961	1224.695	-0.266				35670.000
1224.695	1224.429	-0.266	R = 75.000 L = 123.014	L = 10.000	7.000%	35680.000
1224.429	1224.163	-0.266				35690.000
1224.163	1223.897	-0.266	R = 75.000 L = 123.014	L = 10.000	7.000%	35700.000
1223.897	1223.631	-0.266				35710.000
1223.631	1223.365	-0.266	R = 75.000 L = 123.014	L = 10.000	7.000%	35720.000
1223.365	1223.099	-0.266				35730.000
1223.099	1222.833	-0.266	R = 75.000 L = 123.014	L = 10.000	7.000%	35740.000
1222.833	1222.567	-0.266				35750.000
1222.567	1222.301	-0.266	R = 75.000 L = 123.014	L = 10.000	7.000%	35760.000
1222.301	1222.035	-0.266				35770.000
1222.035	1221.769	-0.266	R = 75.000 L = 123.014	L = 10.000	7.000%	35780.000
1221.769	1221.503	-0.266				35790.000
1221.503	1221.237	-0.266	R = 75.000 L = 123.014	L = 10.000	7.000%	35800.000
1221.237	1220.971	-0.266				35810.000
1220.971	1220.705	-0.266	R = 75.000 L = 123.014	L = 10.000	7.000%	35820.000
1220.705	1220.439	-0.266				35830.000
1220.439	1220.173	-0.266	R = 75.000 L = 123.014	L = 10.000	7.000%	35840.000
1220.173	1219.907	-0.266				35850.000
1219.907	1219.641	-0.266	R = 75.000 L = 123.014	L = 10.000	7.000%	35860.000
1219.641	1219.375	-0.266				35870.000
1219.375	1219.109	-0.266	R = 75.000 L = 123.014	L = 10.000	7.000%	35880.000
1219.109	1218.843	-0.266				35890.000
1218.843	1218.577	-0.266	R = 75.000 L = 123.014	L = 10.000	7.000%	35900.000
1218.577	1218.311	-0.266				35910.000
1218.311	1218.045	-0.266	R = 75.000 L = 123.014	L = 10.000	7.000%	35920.000
1218.045	1217.779	-0.266				35930.000
1217.779	1217.513	-0.266	R = 75.000 L = 123.014	L = 10.000	7.000%	35940.000
1217.513	1217.247	-0.266				35950.000
1217.247	1216.981	-0.266	R = 75.000 L = 123.014	L = 10.000	7.000%	35960.000
1216.981	1216.715	-0.266				35970.000
1216.715	1216.449	-0.266	R = 75.000 L = 123.014	L = 10.000	7.000%	35980.000
1216.449	1216.183	-0.266				35990.000
1216.183	1215.917	-0.266	R = 75.000 L = 123.014	L = 10.000	7.000%	36000.000
1215.917	1215.651	-0.266				

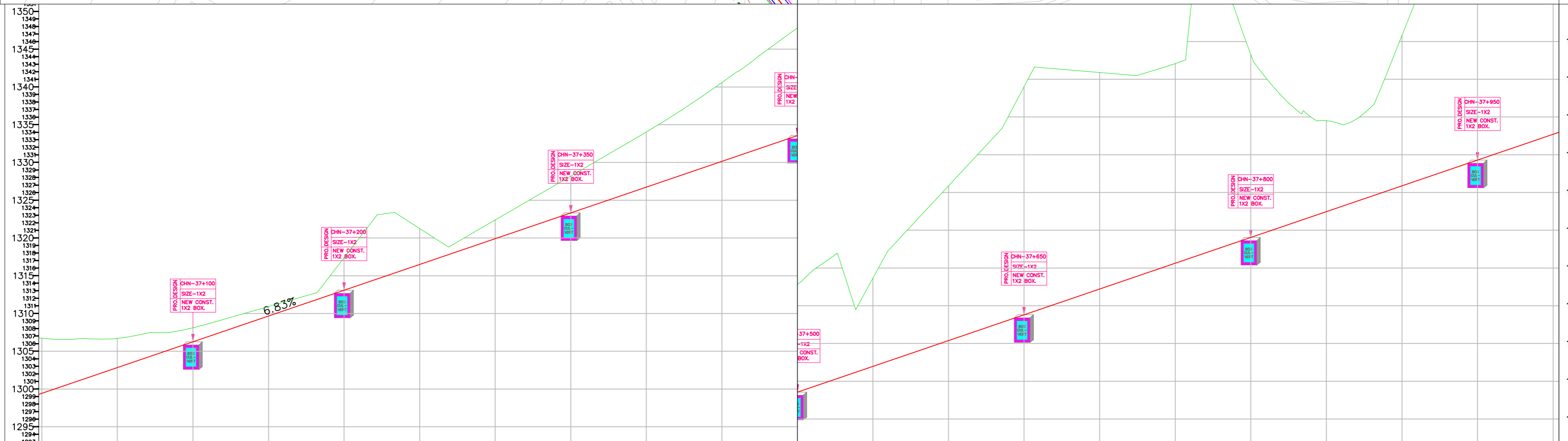
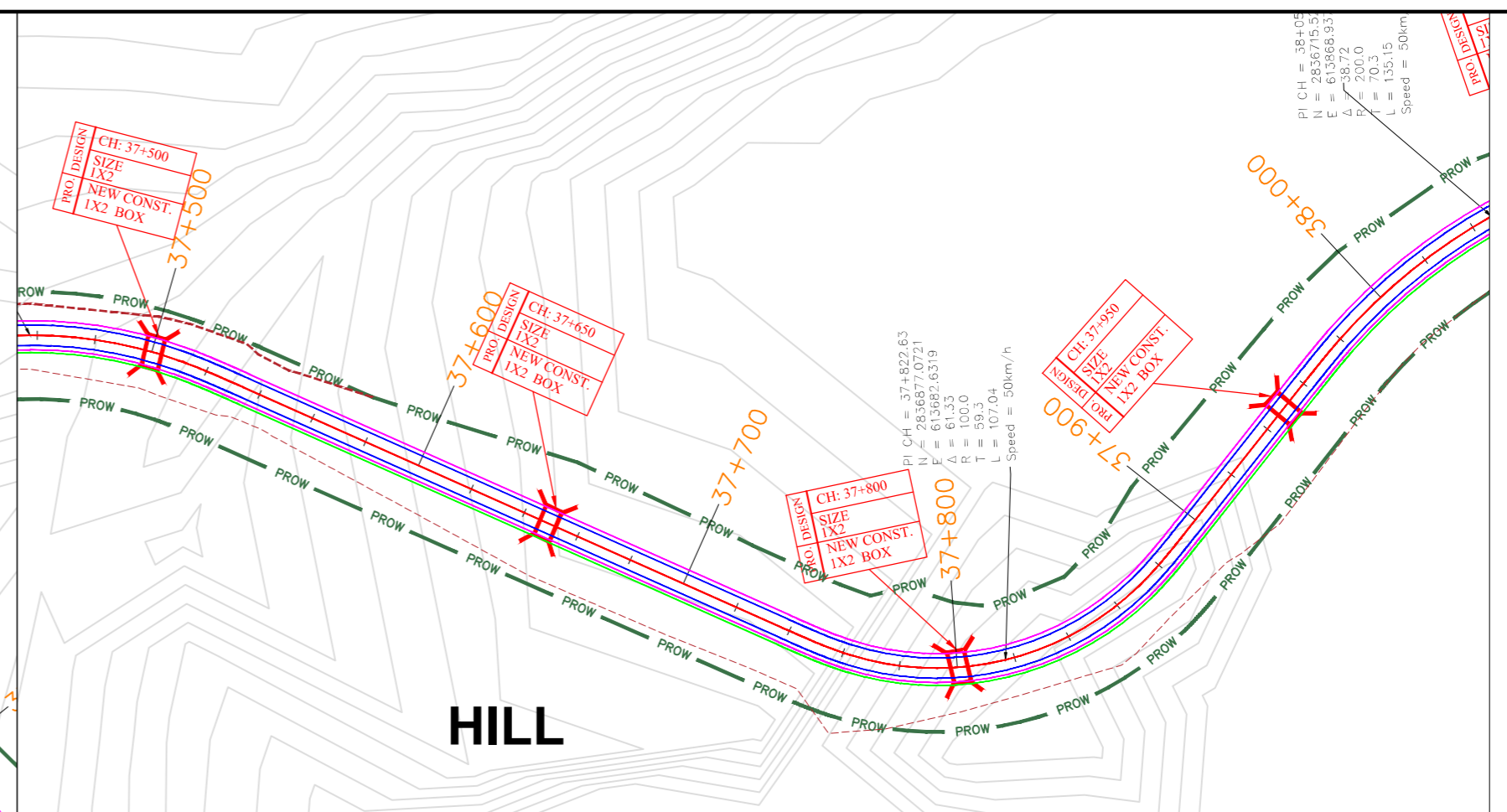
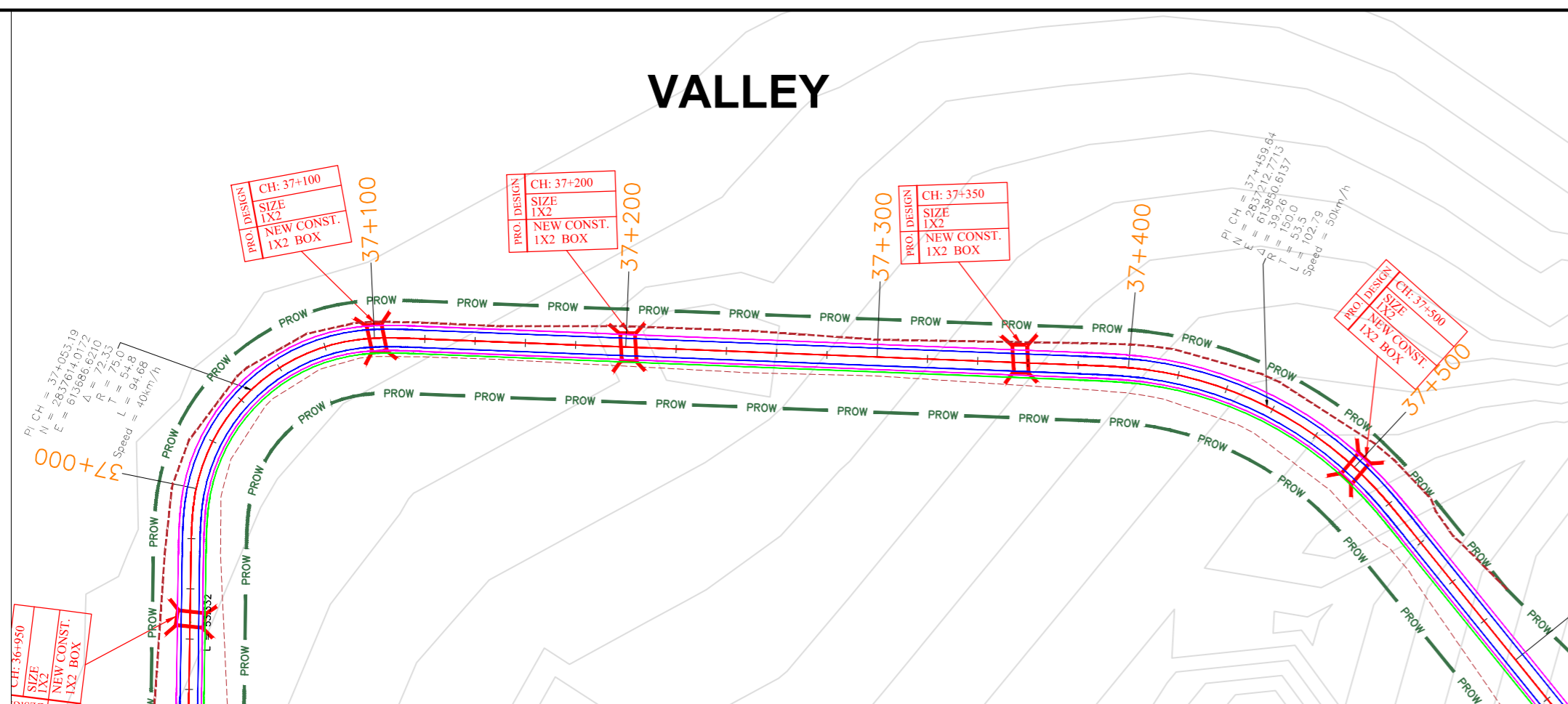
Project Title Consultancy Services for carrying out Feasibility Study, Preparation of Detailed Project Report (DPR) and providing pre-construction services in respect of 2 Lining of Kohima Bypass connecting NH-39 (New NH-02), NH-150 (New NH-02), NH-61 (New NH-29) and NH-39 (New NH-02) on Engineering, Procurement and Construction (EPC) mode in the state of Nagaland		Client  National Highways & Infrastructure Development Corporation Ltd		Drawing Title: PLAN & PROFILE Drawing No.: HEC-AIPPL/NHIDCL/KB/GAD/ Scale: - NTS Drn: PRAWAT Dgn: P.MISHRA Appd: A.C. GARG Date: JAN.-2020		CONSULTANT HIGHWAY ENGINEERING CONSULTANT IN ASSOCIATION WITH AGNITIO INFRASTRUCTURE PROJECT PVT LTD		LEGEND PROPOSED CENTRE LINE CARRIAGEWAY PAVED SHOULDER FORMATION WIDTH CUT LINE PROPOSED ROW							
Revision Details <table border="1"> <thead> <tr> <th>Chk</th> <th>Date</th> <th>Suffix</th> </tr> </thead> <tbody> <tr> <td> </td> <td> </td> <td> </td> </tr> </tbody> </table>		Chk	Date	Suffix				Project Title This drawing is the property of AGNITIO INFRASTRUCTURE PROJECTS PVT LTD and must not be passed on to any person or body not authorised by us to receive it nor copied or otherwise made use of either in full or in part by such person or body without our prior permission in writing. Original Size: A2 Path - Plotting Scale:		Sheet : 36 OF 45		CONSULTANT HIGHWAY ENGINEERING CONSULTANT IN ASSOCIATION WITH AGNITIO INFRASTRUCTURE PROJECT PVT LTD		LEGEND PROPOSED CENTRE LINE CARRIAGEWAY PAVED SHOULDER FORMATION WIDTH CUT LINE PROPOSED ROW	
Chk	Date	Suffix													



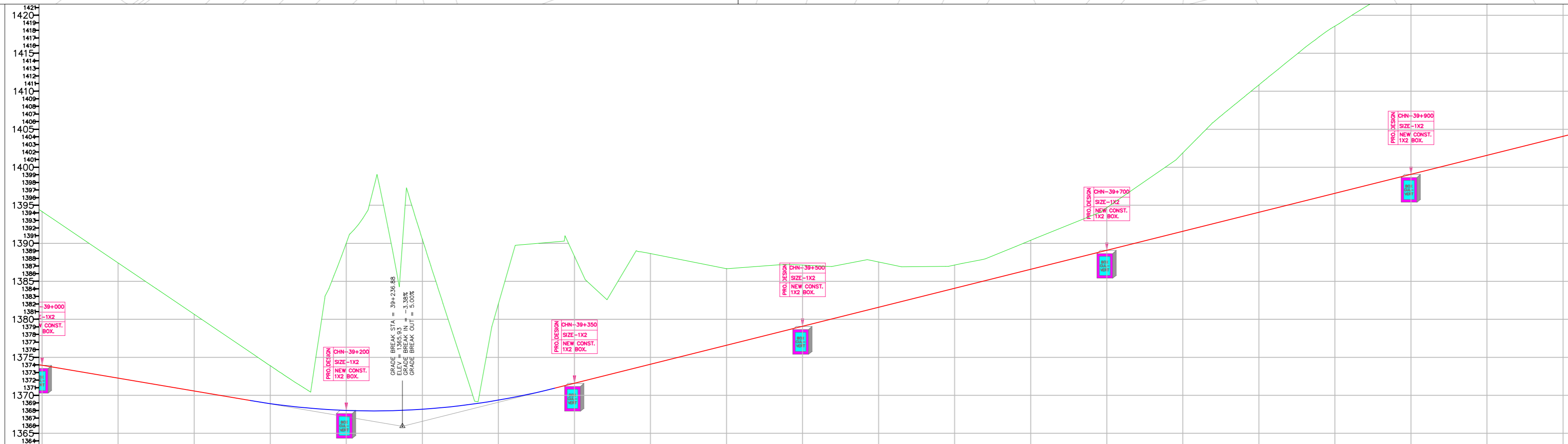
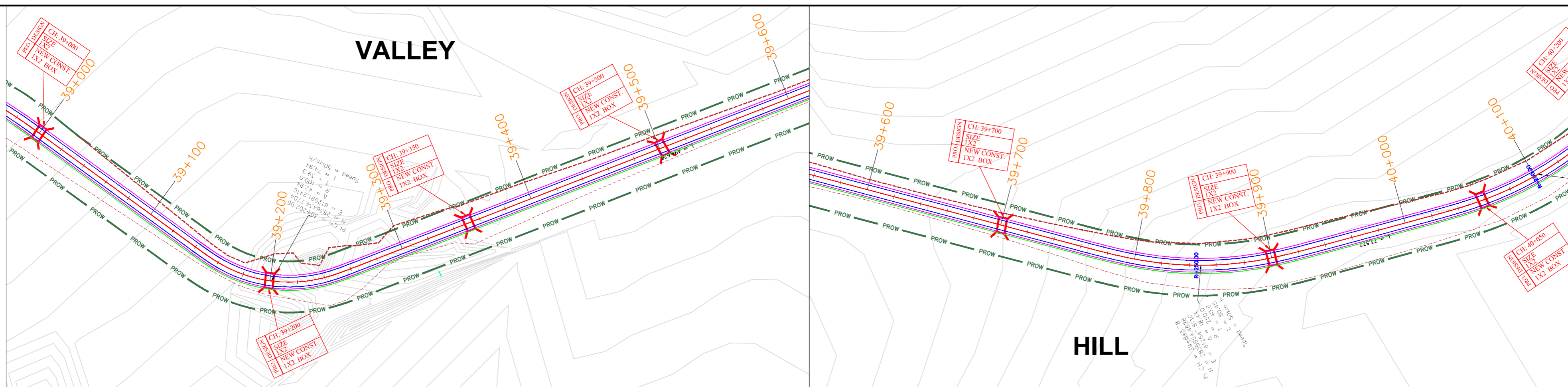
NEW ROAD LEVEL	EXISTING GENERAL GROUND LEVEL	LEVEL DIFFERENCE	VERTICAL GEOMETRY	HORIZONTAL GEOMETRY	SUPERELEVATION	CHAINAGE
1231.361	1235.989	-4.628				36000.000
1231.910	1240.653	-8.743				36010.000
1232.527	1240.941	-8.414				36020.000
1233.203	1242.591	-9.388				36030.000
1233.866	1245.314	-11.428				36040.000
1234.568	1248.025	-13.457				36050.000
1235.251	1250.494	-15.243				36060.000
1235.917	1256.934	-16.630				36070.000
1236.617	1266.617	-19.981				36080.000
1237.299	1267.600	-20.301				36090.000
1237.982	1272.540	-24.558				36100.000
1238.665	1274.401	-25.736				36110.000
1239.347	1274.849	-25.502				36120.000
1240.030	1275.299	-25.269				36130.000
1240.713	1275.749	-25.036				36140.000
1241.396	1276.199	-24.803				36150.000
1242.078	1276.649	-24.571				36160.000
1242.761	1277.099	-24.338				36170.000
1243.444	1277.549	-24.105				36180.000
1244.127	1277.999	-23.872				36190.000
1244.810	1278.449	-23.639				36200.000
1245.492	1278.899	-23.406				36210.000
1246.175	1279.349	-23.173				36220.000
1246.858	1279.799	-22.940				36230.000
1247.540	1280.249	-22.707				36240.000
1248.223	1280.699	-22.474				36250.000
1248.906	1281.149	-22.241				36260.000
1249.589	1281.599	-22.008				36270.000
1250.271	1282.049	-21.775				36280.000
1250.954	1282.499	-21.542				36290.000
1251.637	1282.949	-21.309				36300.000
1252.319	1283.399	-21.076				36310.000
1253.002	1283.849	-20.843				36320.000
1253.685	1284.299	-20.610				36330.000
1254.368	1284.749	-20.377				36340.000
1255.050	1285.199	-20.144				36350.000
1255.733	1285.649	-19.911				36360.000
1256.416	1286.099	-19.678				36370.000
1257.099	1286.549	-19.445				36380.000
1257.781	1286.999	-19.212				36390.000
1258.464	1287.449	-18.979				36400.000
1259.147	1287.899	-18.746				36410.000
1259.829	1288.349	-18.513				36420.000
1260.512	1288.799	-18.280				36430.000
1261.195	1289.249	-18.047				36440.000
1261.878	1289.699	-17.814				36450.000
1262.561	1290.149	-17.581				36460.000
1263.243	1290.599	-17.348				36470.000
1263.926	1291.049	-17.115				36480.000
1264.609	1291.499	-16.882				36490.000
1265.291	1291.949	-16.649				36500.000
1265.974	1292.399	-16.416				36510.000
1266.657	1292.849	-16.183				36520.000
1267.339	1293.299	-15.950				36530.000
1268.022	1293.749	-15.717				36540.000
1268.705	1294.199	-15.484				36550.000
1269.388	1294.649	-15.251				36560.000
1270.071	1295.099	-15.018				36570.000
1270.753	1295.549	-14.785				36580.000
1271.436	1295.999	-14.552				36590.000
1272.119	1296.449	-14.319				36600.000
1272.802	1296.899	-14.086				36610.000
1273.484	1297.349	-13.853				36620.000
1274.167	1297.799	-13.620				36630.000
1274.850	1298.249	-13.387				36640.000
1275.532	1298.699	-13.154				36650.000
1276.215	1299.149	-12.921				36660.000
1276.898	1299.599	-12.688				36670.000
1277.581	1300.049	-12.455				36680.000
1278.263	1300.499	-12.222				36690.000
1278.946	1300.949	-11.989				36700.000
1279.629	1301.399	-11.756				36710.000
1280.312	1301.849	-11.523				36720.000
1280.994	1302.299	-11.290				36730.000
1281.677	1302.749	-11.057				36740.000
1282.360	1303.199	-10.824				36750.000
1283.043	1303.649	-10.591				36760.000
1283.725	1304.099	-10.358				36770.000
1284.408	1304.549	-10.125				36780.000
1285.091	1304.999	-9.892				36790.000
1285.774	1305.449	-9.659				36800.000
1286.456	1305.899	-9.426				36810.000
1287.139	1306.349	-9.193				36820.000
1287.822	1306.799	-8.960				36830.000
1288.504	1307.249	-8.727				36840.000
1289.187	1307.699	-8.494				36850.000
1289.870	1308.149	-8.261				36860.000
1290.553	1308.599	-8.028				36870.000
1291.235	1309.049	-7.795				36880.000
1291.918	1309.499	-7.562				36890.000
1292.601	1310.000	-7.400				36900.000
1293.284	1310.500	-7.218				36910.000
1293.966	1311.000	-7.036				36920.000
1294.649	1311.500	-6.854				36930.000
1295.332	1312.000	-6.672				36940.000
1296.015	1312.500	-6.490				36950.000
1296.697	1313.000	-6.308				36960.000
1297.380	1313.500	-6.126				36970.000
1298.063	1314.000	-5.944				36980.000
1298.746	1314.500	-5.762				36990.000
1299.429	1315.000	-5.580				37000.000

Revision Details	Chk	Date	Suffix	<p>Project Title</p> <p>Consultancy Services for carrying out Feasibility Study, Preparation of Detailed Project Report (DPR) and providing pre-construction services in respect of 2 Lining of Kohima Bypass connecting NH-39 (New NH-02), NH-150 (New NH-02), NH-61 (New NH-02) and NH-39 (New NH-02) on Engineering, Procurement and Construction (EPC) mode in the state of Nagaland</p>	<p>This drawing is the property of AGNITIO INFRASTRUCTURE PROJECTS PVT LTD and must not be passed on to any person or body not authorised by us to receive it nor be copied or otherwise made use of either in full or in part by such person or body without our prior permission in writing.</p> <p>Original Size: A2</p> <p>Path -</p> <p>Plotting Scale:</p>	<p>Client</p> <p>National Highways & Infrastructure Development Corporation Ltd</p>	<p>Drawing Title: PLAN & PROFILE</p> <p>Drawing No.:HEC-AIPPL/NHIDCL/KB/GAD/</p> <p>Scale :- NTS</p> <p>Drn PRAWAT</p> <p>Dgn. P.MISHRA</p> <p>Appd A.C. GARG</p> <p>Date JAN.-2020</p>	<p>Sheet : 37 OF 45</p> <p>CONSULTANT</p> <p>HIGHWAY ENGINEERING CONSULTANT IN ASSOCIATION WITH AGNITIO INFRASTRUCTURE PROJECT PVT LTD</p>	<p>LEGEND</p> <p>PROPOSED CENTRE LINE</p> <p>CARRIAGEWAY</p> <p>PAVED SHOULDER</p> <p>FORMATION WIDTH</p> <p>CUT LINE</p> <p>PROPOSED ROW</p>


VALLEY

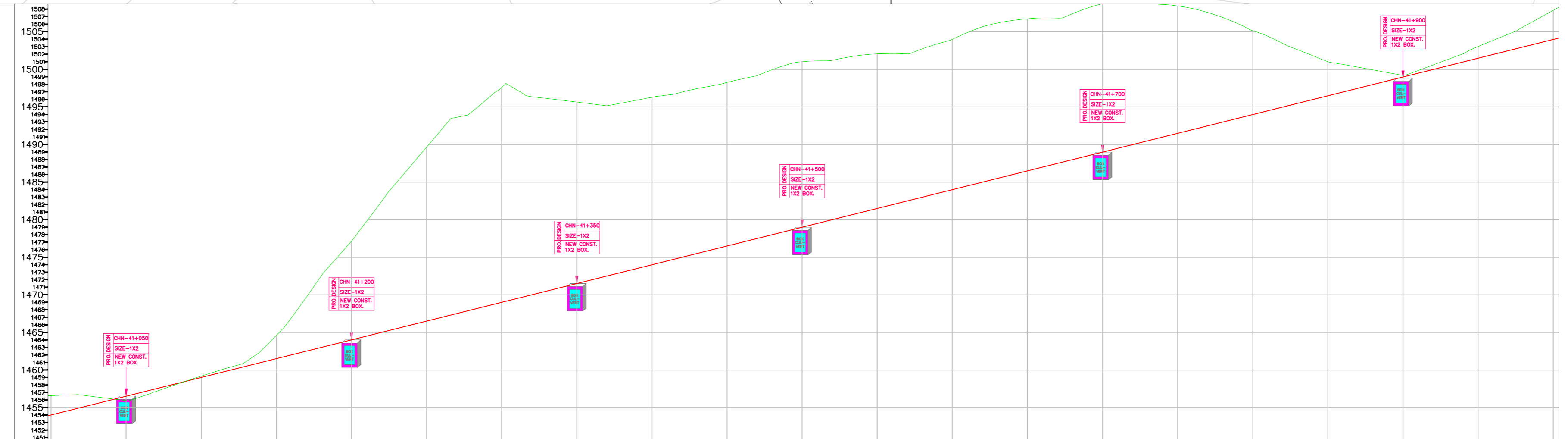
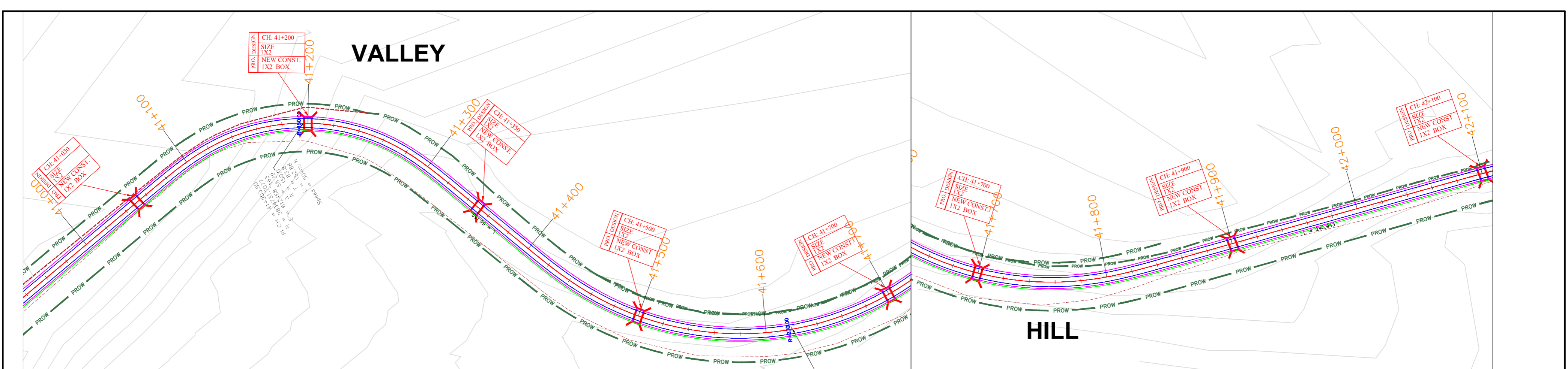


NEW ROAD LEVEL	EXISTING GENERAL GROUND LEVEL	LEVEL DIFFERENCE	VERTICAL GEOMETRY	HORIZONTAL GEOMETRY	SUPERELEVATION	CHAINAGE
1329.428	1306.734	-22.694	G = 6.827% L = 2267.916	R: 75.000 L: 94.677	7.000%	0+000
1306.734	1306.734	0.000				0+000
1300.111	1306.583	-6.472	L: 25.000	L: 25.000	7.000%	0+000
1300.111	1306.583	-6.472				0+000
1300.794	1306.671	-5.877	L: 263.090	L: 25.000	7.000%	0+000
1300.794	1306.671	-5.877				0+000
1302.159	1306.608	-4.449	L: 25.000	R: 150.000 L: 102.793	7.000%	0+000
1302.159	1306.608	-4.449				0+000
1302.842	1306.700	-3.858	L: 204.402	L: 25.000	7.000%	0+000
1302.842	1306.700	-3.858				0+000
1303.525	1307.000	-3.475	L: 25.000	R: 100.000 L: 107.043	7.000%	0+000
1303.525	1307.000	-3.475				0+000
1304.207	1307.411	-3.203	L: 25.000	L: 25.000	7.000%	0+000
1304.207	1307.411	-3.203				0+000
1304.890	1307.453	-2.563	L: 64.503	L: 20.000	5.600%	0+000
1304.890	1307.453	-2.563				0+000
1305.573	1307.681	-2.108				0+000
1306.256	1308.110	-1.854				0+000
1306.938	1308.637	-1.699				0+000
1307.621	1309.207	-1.586				0+000
1308.304	1309.781	-1.477				0+000
1308.987	1310.354	-1.368				0+000
1309.669	1310.928	-1.259				0+000
1310.352	1311.502	-1.150				0+000
1311.035	1312.076	-1.041				0+000
1311.718	1312.650	-0.932				0+000
1312.400	1313.224	-0.823				0+000
1313.083	1313.798	-0.715				0+000
1313.766	1314.372	-0.607				0+000
1314.448	1314.946	-0.500				0+000
1315.131	1315.520	-0.393				0+000
1315.814	1316.094	-0.286				0+000
1316.497	1316.668	-0.179				0+000
1317.179	1317.242	-0.065				0+000
1317.862	1317.816	-0.054				0+000
1318.545	1318.390	-0.045				0+000
1319.228	1318.964	-0.036				0+000
1319.910	1319.538	-0.028				0+000
1320.593	1320.112	-0.019				0+000
1321.276	1320.686	-0.010				0+000
1321.959	1321.260	-0.001				0+000
1322.641	1321.834	0.000				0+000
1323.324	1322.408	0.000				0+000
1324.007	1322.982	0.000				0+000
1324.689	1323.556	0.000				0+000
1325.372	1324.130	0.000				0+000
1326.055	1324.704	0.000				0+000
1326.738	1325.278	0.000				0+000
1327.420	1325.852	0.000				0+000
1328.103	1326.426	0.000				0+000
1328.786	1327.000	0.000				0+000
1329.469	1327.574	0.000				0+000
1330.151	1328.148	0.000				0+000
1330.834	1328.722	0.000				0+000
1331.517	1329.296	0.000				0+000
1332.200	1329.870	0.000				0+000
1332.882	1330.444	0.000				0+000
1333.565	1331.018	0.000				0+000
1334.248	1331.592	0.000				0+000
1334.931	1332.166	0.000				0+000
1335.613	1332.740	0.000				0+000
1336.296	1333.314	0.000				0+000
1336.979	1333.888	0.000				0+000
1337.662	1334.462	0.000				0+000
1338.345	1335.036	0.000				0+000
1339.028	1335.610	0.000				0+000
1339.711	1336.184	0.000				0+000
1340.394	1336.758	0.000				0+000
1341.077	1337.332	0.000				0+000
1341.760	1337.906	0.000				0+000
1342.443	1338.480	0.000				0+000
1343.126	1339.054	0.000				0+000
1343.809	1339.628	0.000				0+000
1344.492	1340.202	0.000				0+000
1345.175	1340.776	0.000				0+000
1345.858	1341.350	0.000				0+000
1346.541	1341.924	0.000				0+000
1347.224	1342.498	0.000				0+000
1347.907	1343.072	0.000				0+000
1348.590	1343.646	0.000				0+000
1349.273	1344.220	0.000				0+000
1350.000	1344.800	0.000				0+000
1350.700	1345.400	0.000				0+000
1351.400	1346.000	0.000				0+000
1352.100	1346.600	0.000				0+000
1352.800	1347.200	0.000				0+000
1353.500	1347.800	0.000				0+000
1354.200	1348.400	0.000				0+000
1354.900	1349.000	0.000				0+000
1355.600	1349.600	0.000				0+000
1356.300	1350.200	0.000				0+000
1357.000	1350.800	0.000				0+000
1357.700	1351.400	0.000				0+000
1358.400	1352.000	0.000				0+000
1359.100	1352.600	0.000				0+000
1359.800	1353.200	0.000				0+000
1360.500	1353.800	0.000				0+000
1361.200	1354.400	0.000				0+000
1361.900	1355.000	0.000				0+000
1362.600	1355.600	0.000				0+000
1363.300	1356.200	0.000				0+000
1364.000	1356.800	0.000				0+000
1364.700	1357.400	0.000				0+000
1365.400	1358.000	0.000				0+000
1366.100	1358.600	0.000				0+000
1366.800	1359.200	0.000				0+000
1367.500	1359.800	0.000				0+000
1368.200	1360.400	0.000				0+000
1368.900	1361.000	0.000				0+000
1369.600	1361.600	0.000				0+000
1370.300	1362.200	0.000				0+000
1371.000	1362.800	0.000				0+000
1371.700	1363.400	0.000				0+000
1372.400	1364.000	0.000				0+000
1373.100	1364.600	0.000				0+000
1373.800	1365.200	0.000				0+000
1374.500	1365.800	0.000				0+000
1375.200	1366.400	0.000				0+000
1375.900	1367.000	0.000				0+000
1376.600	1367.600	0.000				0+000
1377.300	1368.200	0.000				0+000
1378.000	1368.800	0.000				0+000
1378.700	1369.400	0.000				0+000
1379.400	1370.000	0.000				0+000
1380.100	1370.600	0.000				0+000
1380.800	1371.200	0.000				0+000
1381.500	1371.800	0.000				0+000
1382.200	1372.400	0.000				0+000
1382.900	1373.000	0.000				0+000
1383.600	1373.600	0.000				0+000
1384.300	1374.200	0.000				0+000
1385.000	1374.800	0.000				0+000
1385.700	1375.400	0.000				0+000
1386.400	1376.000	0.000				0+000
1387.100	1376.600	0.000				0+000
1387.800	1377.200	0.000				0+000
1388.500	1377.800	0.000				0+000
1389.200	1378.400	0.000				0+000
1389.900	1379.000	0.000				0+000
1390.600	1379.600	0.000				0+000
1391.300	1380.200	0.000				0+000
1392.000	1380.800	0.000				0+000
1392.700	1381.400	0.000				0+000
1393.400	1382.000	0.000				0+000
1394.100	1382.600	0.000				0+000
1394.800	1383.200	0.000				0+000
1395.500	1383.800	0.000				0+000
1396.200	1384.400	0.000				0+000
1396.900	1385.000	0.000				0+000
1397.600	1385.600	0.000				0+000
1398.300	1386.200	0.000				0+000
1399.000	1386.800	0.000				0+000
1399.700	1387.400	0.000				0+000
1400.400	1388.000	0.000				0+000
1401.100	1388.600	0.000				0+000
1401.800	1389.200	0.000				0+000
1402.500	1389.800	0.000				0+000
1403.200	1390.400	0.000				0+000
1403.900	1391.000	0.000				0+000
1404.600	1391.600	0.000				0+000
1405.300	1392.200	0.000				0+000
1406.000	1392.800	0.000				0+000
1406.700	139					




NEW ROAD LEVEL	EXISTING GENERAL GROUND LEVEL	LEVEL DIFFERENCE	VERTICAL GEOMETRY	HORIZONTAL GEOMETRY	SUPERELEVATION	CHAINAGE
1373.948	1373.610	-0.338				39+000.000
1373.948	1373.610	-0.338				39+010.000
1373.948	1373.610	-0.338				39+020.000
1373.948	1373.610	-0.338				39+030.000
1373.948	1373.610	-0.338				39+040.000
1373.948	1373.610	-0.338				39+050.000
1373.948	1373.610	-0.338				39+060.000
1373.948	1373.610	-0.338				39+070.000
1373.948	1373.610	-0.338				39+080.000
1373.948	1373.610	-0.338				39+090.000
1373.948	1373.610	-0.338				39+100.000
1373.948	1373.610	-0.338				39+110.000
1373.948	1373.610	-0.338				39+120.000
1373.948	1373.610	-0.338				39+130.000
1373.948	1373.610	-0.338				39+140.000
1373.948	1373.610	-0.338				39+150.000
1373.948	1373.610	-0.338				39+160.000
1373.948	1373.610	-0.338				39+170.000
1373.948	1373.610	-0.338				39+180.000
1373.948	1373.610	-0.338				39+190.000
1373.948	1373.610	-0.338				39+200.000
1373.948	1373.610	-0.338				39+210.000
1373.948	1373.610	-0.338				39+220.000
1373.948	1373.610	-0.338				39+230.000
1373.948	1373.610	-0.338				39+240.000
1373.948	1373.610	-0.338				39+250.000
1373.948	1373.610	-0.338				39+260.000
1373.948	1373.610	-0.338				39+270.000
1373.948	1373.610	-0.338				39+280.000
1373.948	1373.610	-0.338				39+290.000
1373.948	1373.610	-0.338				39+300.000
1373.948	1373.610	-0.338				39+310.000
1373.948	1373.610	-0.338				39+320.000
1373.948	1373.610	-0.338				39+330.000
1373.948	1373.610	-0.338				39+340.000
1373.948	1373.610	-0.338				39+350.000
1373.948	1373.610	-0.338				39+360.000
1373.948	1373.610	-0.338				39+370.000
1373.948	1373.610	-0.338				39+380.000
1373.948	1373.610	-0.338				39+390.000
1373.948	1373.610	-0.338				39+400.000
1373.948	1373.610	-0.338				39+410.000
1373.948	1373.610	-0.338				39+420.000
1373.948	1373.610	-0.338				39+430.000
1373.948	1373.610	-0.338				39+440.000
1373.948	1373.610	-0.338				39+450.000
1373.948	1373.610	-0.338				39+460.000
1373.948	1373.610	-0.338				39+470.000
1373.948	1373.610	-0.338				39+480.000
1373.948	1373.610	-0.338				39+490.000
1373.948	1373.610	-0.338				39+500.000
1373.948	1373.610	-0.338				39+510.000
1373.948	1373.610	-0.338				39+520.000
1373.948	1373.610	-0.338				39+530.000
1373.948	1373.610	-0.338				39+540.000
1373.948	1373.610	-0.338				39+550.000
1373.948	1373.610	-0.338				39+560.000
1373.948	1373.610	-0.338				39+570.000
1373.948	1373.610	-0.338				39+580.000
1373.948	1373.610	-0.338				39+590.000
1373.948	1373.610	-0.338				39+600.000
1373.948	1373.610	-0.338				39+610.000
1373.948	1373.610	-0.338				39+620.000
1373.948	1373.610	-0.338				39+630.000
1373.948	1373.610	-0.338				39+640.000
1373.948	1373.610	-0.338				39+650.000
1373.948	1373.610	-0.338				39+660.000
1373.948	1373.610	-0.338				39+670.000
1373.948	1373.610	-0.338				39+680.000
1373.948	1373.610	-0.338				39+690.000
1373.948	1373.610	-0.338				39+700.000
1373.948	1373.610	-0.338				39+710.000
1373.948	1373.610	-0.338				39+720.000
1373.948	1373.610	-0.338				39+730.000
1373.948	1373.610	-0.338				39+740.000
1373.948	1373.610	-0.338				39+750.000
1373.948	1373.610	-0.338				39+760.000
1373.948	1373.610	-0.338				39+770.000
1373.948	1373.610	-0.338				39+780.000
1373.948	1373.610	-0.338				39+790.000
1373.948	1373.610	-0.338				39+800.000
1373.948	1373.610	-0.338				39+810.000
1373.948	1373.610	-0.338				39+820.000
1373.948	1373.610	-0.338				39+830.000
1373.948	1373.610	-0.338				39+840.000
1373.948	1373.610	-0.338				39+850.000
1373.948	1373.610	-0.338				39+860.000
1373.948	1373.610	-0.338				39+870.000
1373.948	1373.610	-0.338				39+880.000
1373.948	1373.610	-0.338				39+890.000
1373.948	1373.610	-0.338				39+900.000
1373.948	1373.610	-0.338				39+910.000
1373.948	1373.610	-0.338				39+920.000
1373.948	1373.610	-0.338				39+930.000
1373.948	1373.610	-0.338				39+940.000
1373.948	1373.610	-0.338				39+950.000
1373.948	1373.610	-0.338				39+960.000
1373.948	1373.610	-0.338				39+970.000
1373.948	1373.610	-0.338				39+980.000
1373.948	1373.610	-0.338				39+990.000
1373.948	1373.610	-0.338				40+000.000

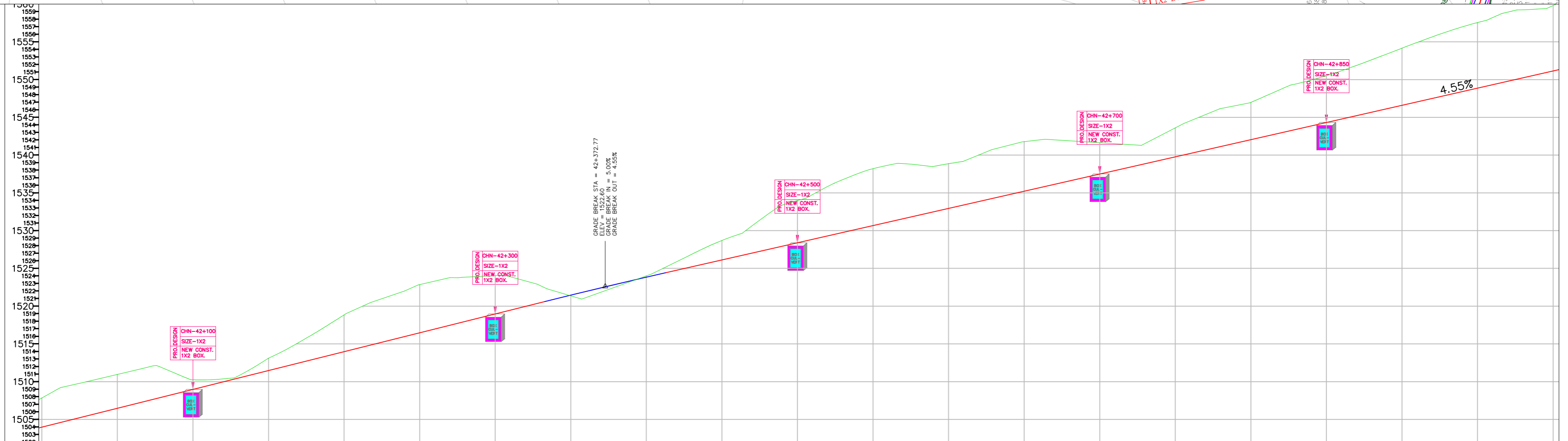
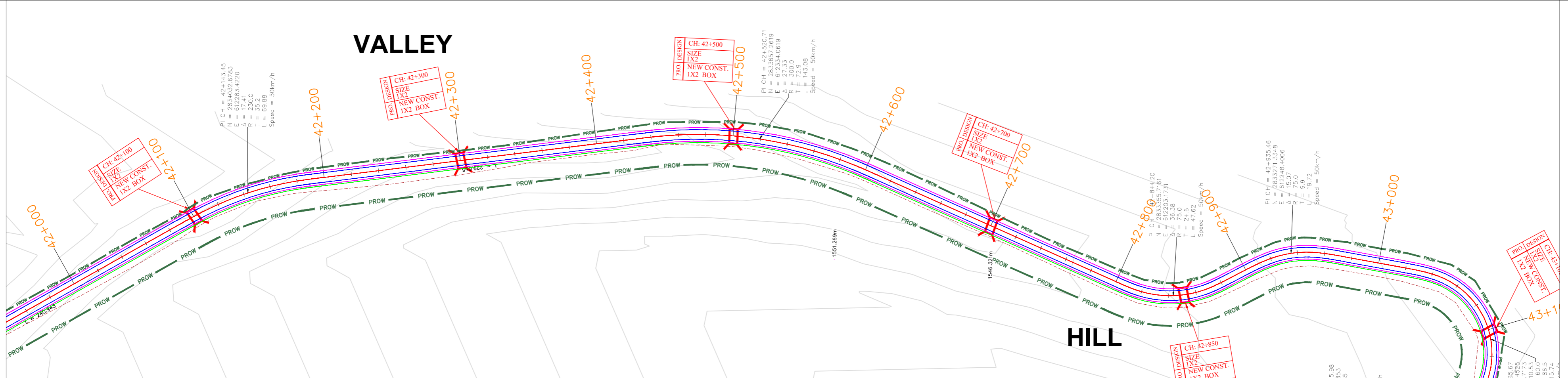
Revision Details	Chk. By	Date	Suffix	Project Title Consultancy Services for carrying out Feasibility Study, Preparation of Detailed Project Report (DPR) and providing pre-construction services in respect of 2 Lining of Kohima Bypass connecting NH-39 (New NH-02), NH-150 (New NH-02), NH-61 (New NH-29) and NH-39 (New NH-02) on Engineering, Procurement and Construction (EPC) mode in the state of Nagaland	Client  National Highways & Infrastructure Development Corporation Ltd	Drawing Title: PLAN & PROFILE Drawing No.:HEC-AIPPL/NHIDCL/KB/GAD/ Scale :- NTS Dwn: PRAWAT, Dgn: P.MISHRA, Appd: A.C. GARG, Date: JAN.-2020	Sheet : 40 OF 45 Date: JAN.-2020	CONSULTANT HIGHWAY ENGINEERING CONSULTANT IN ASSOCIATION WITH AGNITIO INFRASTRUCTURE PROJECT PVT LTD	LEGEND PROPOSED CENTRE LINE CARRIAGEWAY PAVED SHOULDER FORMATION WIDTH CUT LINE PROPOSED ROW
	This drawing is the property of AGNITIO INFRASTRUCTURE PROJECTS PVT LTD and must not be passed on to any person or body not authorised by us to receive it nor be copied or otherwise made use of either in full or in part by such person or body without our prior permission in writing. Original Size: A2 Path - Plotting Scale:								




NEW ROAD LEVEL	EXISTING GENERAL GROUND LEVEL	LEVEL DIFFERENCE	VERTICAL GEOMETRY	HORIZONTAL GEOMETRY	SUPERELEVATION	CHAINAGE
1454.018	1456.587	-2.569				41000.000
1454.918	1456.666	-2.148				41010.000
1455.017	1456.670	-1.653				41020.000
1455.517	1456.421	-0.904				41030.000
1456.016	1456.171	-0.155				41040.000
1456.516	1455.924	0.595				41050.000
1457.016	1456.458	0.557				41060.000
1457.515	1457.155	-0.360				41070.000
1458.015	1457.847	-0.167				41080.000
1458.514	1458.528	-0.014				41090.000
1459.014	1459.189	-0.175				41100.000
1459.513	1459.821	-0.308				41110.000
1460.013	1460.415	-0.402				41120.000
1460.513	1461.141	-0.628				41130.000
1461.012	1462.594	-1.582				41140.000
1461.512	1464.611	-3.099				41150.000
1462.011	1466.948	-4.936				41160.000
1462.511	1469.705	-7.194				41170.000
1463.011	1472.556	-9.546				41180.000
1463.510	1474.873	-11.363				41190.000
1464.010	1477.16	-13.151				41200.000
1464.509	1479.757	-15.248				41210.000
1465.009	1482.428	-17.419				41220.000
1465.509	1484.945	-19.436				41230.000
1466.008	1487.290	-21.282				41240.000
1466.508	1489.649	-23.142				41250.000
1467.007	1492.003	-24.995				41260.000
1467.507	1493.615	-26.108				41270.000
1468.006	1494.333	-26.327				41280.000
1468.506	1495.990	-27.484				41290.000
1469.006	1497.592	-28.586				41300.000
1469.505	1497.282	-27.777				41310.000
1470.005	1496.356	-26.351				41320.000
1470.504	1496.121	-25.616				41330.000
1471.004	1495.881	-24.877				41340.000
1471.504	1495.640	-24.137				41350.000
1472.003	1495.397	-23.393				41360.000
1472.503	1495.154	-22.651				41370.000
1473.002	1494.946	-21.947				41380.000
1473.502	1494.778	-22.279				41390.000
1474.002	1494.650	-22.279				41400.000
1474.501	1494.568	-22.067				41410.000
1475.001	1494.430	-21.930				41420.000
1475.500	1494.246	-21.806				41430.000
1476.000	1494.006	-21.757				41440.000
1476.499	1493.727	-21.728				41450.000
1476.999	1493.406	-21.667				41460.000
1477.499	1493.046	-21.947				41470.000
1477.998	1492.646	-22.112				41480.000
1478.498	1492.206	-22.018				41490.000
1478.997	1491.726	-21.619				41500.000
1479.497	1491.206	-21.188				41510.000
1479.997	1490.646	-20.561				41520.000
1480.496	1490.046	-20.891				41530.000
1480.996	1489.406	-20.561				41540.000
1481.495	1488.726	-20.106				41550.000
1481.995	1488.006	-19.560				41560.000
1482.495	1487.246	-19.741				41570.000
1482.994	1486.446	-19.886				41580.000
1483.494	1485.606	-19.993				41590.000
1483.993	1484.726	-20.390				41600.000
1484.493	1483.806	-20.668				41610.000
1484.993	1482.846	-20.667				41620.000
1485.492	1481.846	-20.517				41630.000
1485.992	1480.806	-20.241				41640.000
1486.491	1479.726	-19.845				41650.000
1486.991	1478.606	-19.327				41660.000
1487.490	1477.446	-18.845				41670.000
1487.990	1476.246	-18.410				41680.000
1488.490	1475.006	-18.664				41690.000
1488.989	1473.726	-19.760				41700.000
1489.489	1472.406	-19.418				41710.000
1489.988	1471.046	-18.913				41720.000
1490.488	1469.646	-18.273				41730.000
1490.988	1468.206	-17.645				41740.000
1491.487	1466.726	-16.951				41750.000
1491.987	1465.206	-16.094				41760.000
1492.486	1463.646	-15.084				41770.000
1492.986	1462.046	-13.919				41780.000
1493.486	1460.406	-12.596				41790.000
1493.985	1458.726	-11.156				41800.000
1494.485	1457.006	-9.912				41810.000
1494.984	1455.246	-8.462				41820.000
1495.484	1453.446	-7.116				41830.000
1495.983	1451.606	-5.826				41840.000
1496.483	1449.726	-4.538				41850.000
1496.983	1447.806	-3.684				41860.000
1497.482	1445.846	-2.816				41870.000
1497.982	1443.846	-1.948				41880.000
1498.481	1441.806	-1.081				41890.000
1498.981	1439.726	-0.213				41900.000
1499.481	1437.606	-0.357				41910.000
1499.980	1435.446	-0.602				41920.000
1500.480	1433.246	-0.847				41930.000
1500.979	1431.006	-1.092				41940.000
1501.479	1428.726	-1.561				41950.000
1501.979	1426.406	-1.885				41960.000
1502.478	1424.046	-2.194				41970.000
1502.978	1421.646	-2.664				41980.000
1503.477	1419.206	-3.285				41990.000
1503.977	1416.726	-3.866				42000.000

Revision Details	Project Title	Consultancy Services for carrying out Feasibility Study, Preparation of Detailed Project Report (DPR) and providing pre-construction services in respect of 2 Lining of Kohima Bypass connecting NH-39 (New NH-02), NH-150 (New NH-02), NH-61 (New NH-02) and NH-39 (New NH-02) on Engineering, Procurement and Construction (EPC) mode in the state of Nagaland.	This drawing is the property of AGNITIO INFRASTRUCTURE PROJECTS PVT LTD and must not be passed on to any person or body not authorised by us to receive it nor be copied or otherwise made use of either in full or in part by such person or body without our prior permission in writing.	Client	 National Highways & Infrastructure Development Corporation Ltd	Drawing Title: PLAN & PROFILE	CONSULTANT	HIGHWAY ENGINEERING CONSULTANT IN ASSOCIATION WITH AGNITIO INFRASTRUCTURE PROJECT PVT LTD	LEGEND
	Original Size: A2 Path - Plotting Scale:								

VALLEY



Revision Details	Project Title	This drawing is the property of AGNITIO INFRASTRUCTURE PROJECTS PVT LTD and must not be passed on to any person or body not authorised by us to receive it nor copied or otherwise made use of either in full or in part by such person or body without our prior permission in writing. Original Size: A2 Path - Plotting Scale:	Client	 National Highways & Infrastructure Development Corporation Ltd	Drawing Title: PLAN & PROFILE	Drawing No.: HEC-AIPPL/NHIDCL/KB/GAD/ Scale: - NTS Dgn. P.MISHRA Appd. A.C. GARG Date JAN.-2020	Sheet : 43 OF 45	CONSULTANT HIGHWAY ENGINEERING CON- SULTANT IN ASSOCIATION WITH AGNITIO INFRASTRUCTURE PROJECT PVT LTD	LEGEND PROPOSED CENTRE LINE CARRIAGEWAY PAVED SHOULDER FORMATION WIDTH CUT LINE PROPOSED ROW
	Chk. By Date Suffix								

